



**DIPLOMATIC
HYDRAULICS**

21 200/197 ED



CD1-W

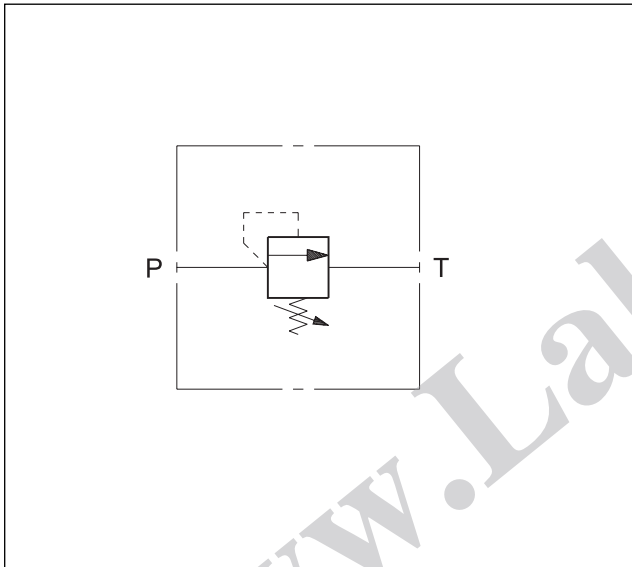
DIRECT OPERATED PRESSURE CONTROL VALVE SERIES 10

THREADED PORTS

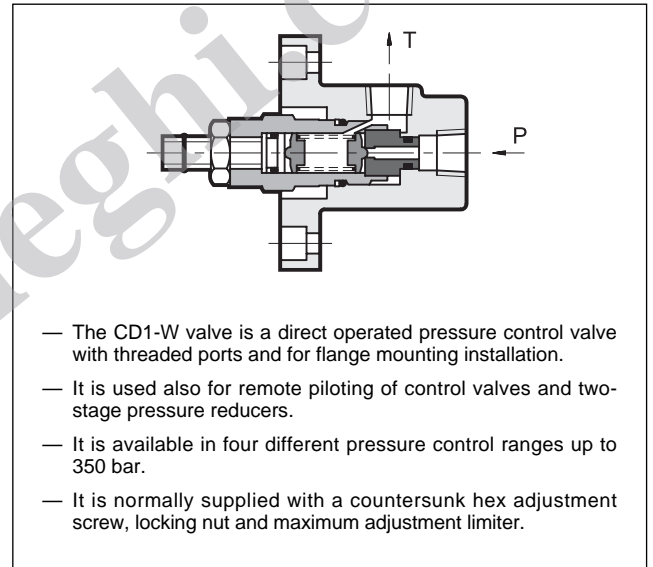
p max 350 bar

Q max 3 l/min

HYDRAULIC SYMBOL



OPERATING PRINCIPLE



PERFORMANCE RATINGS (measured with mineral oil of viscosity 36 cSt at 50°C)

Maximum operating pressure	bar	350
Minimum controlled pressure	see diagram	
Maximum flow rate	l/min	3
Ambient temperature range	°C	-20 ÷ +50
Fluid temperature range	°C	-20 ÷ +70
Fluid viscosity range	cSt	2,8 ÷ 380
Recommended filtration	µm absolute	≤ 25
Recommended viscosity	cSt	25
Mass	kg	1,2



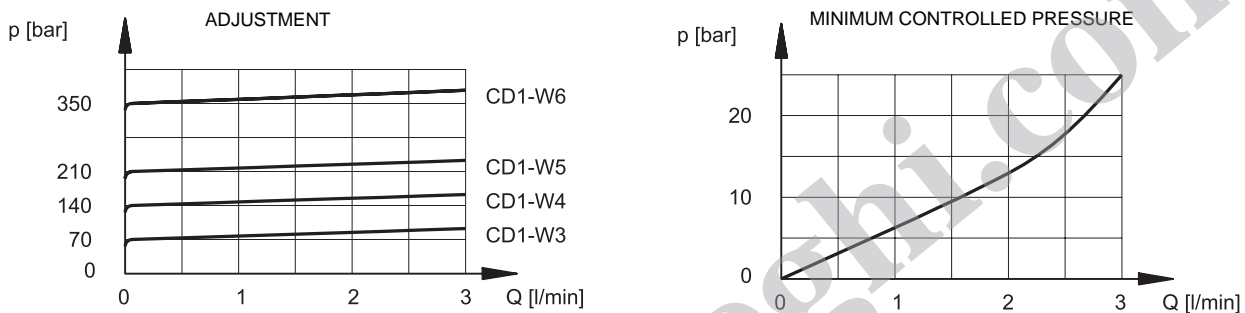
CD1-W

SERIES 10

1 - IDENTIFICATION CODE

	C	D	1	- W	/	/	10	/	
Direct operated pressure control valve	Nominal dimension		Threaded ports: 1/4" NPT	Pressure adjustment range:			Series No. (the overall and mounting dimensions remain unchanged from 10 to 19)	Seals: omit for mineral oils V = viton for special fluids	
	3 = up to 70 bar 5 = up to 210 bar		4 = up to 140 bar 6 = up to 350 bar		M1 = Adjustment knob (omit for adjustment with countersunk hex screw)				

2 - CHARACTERISTIC CURVES (values obtained with viscosity of 36 cSt at 50°C)



3 - HYDRAULIC FLUIDS

Use mineral oil-based hydraulic fluids, with the addition of suitable anti-frothing and anti-oxidizing agents. For the use of other types (water glycol, phosphate esters and others), please consult our technical department.

4 - OVERALL AND MOUNTING DIMENSIONS

dimensions in mm

1	Countersunk hex adjustment screw: spanner 5 Clockwise rotation to increase pressure
2	Locking nut: spanner 17
3	Outlet port T 1/4" NPT
4	Pressure port P 1/4" NPT
5	Identification label
6	Adjustment knob: M1

	<p>DIPLOMATIC OLEODINAMICA SpA 20025 LEGNANO (MI) - P.le Bozzi, 1 / Via Edison Tel. 0331/472111-472236 - Fax 0331/548328</p>	
--	---	--